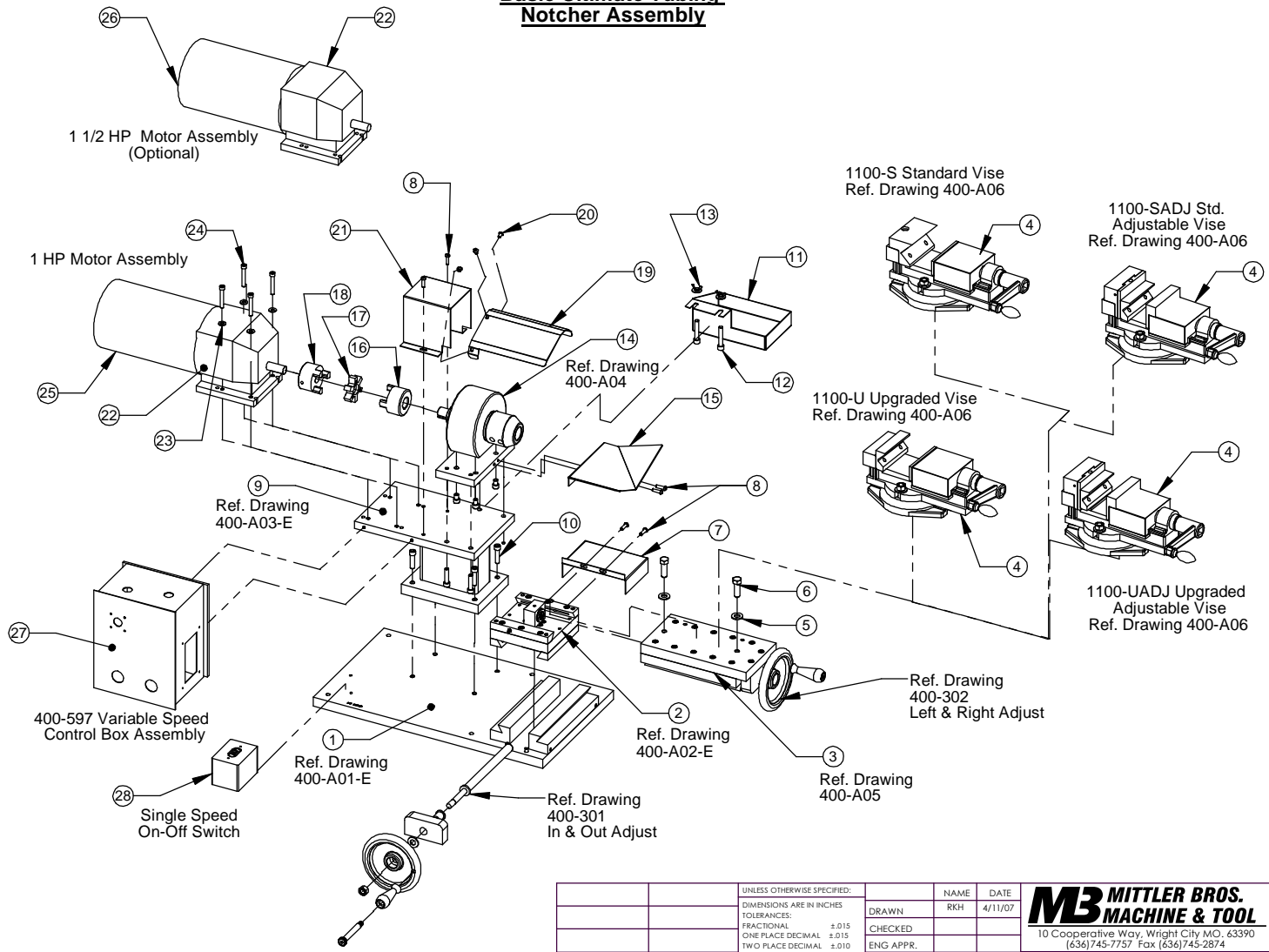


ITEM NO.	PART NUMBER	DESCRIPTION	QTY.
1	400-A01	Base Assembly	1
2	400-A02	L-Gib Assembly	1
3	400-A05	Vise Base Assembly	1
4	400-A06	Vise Assemblies	1
5	1/2"	SAE Flat Washer	2
6	HBOLT 0.5000-13x1.5x1.25-N	Hex Bolt 1/2" - 13 x 1 1/2"	2
7	400-025	Gib Chip Guard	1
8	SBHCSCREW 0.25-20x0.875-HX-N	SBHCS 1/4" - 20 x 7/8	6
9	400-A03	Motor Mount Assembly	1
10	HX-SHCS 0.375-16x1.5x1.5-N	SHCS 3/8" - 16 x 1 1/2"	6
11	400-100	Chip Tray	1
12	3/8-16 x 2.00	SHCS	2
13	0.375-16 Wing Nut	3/8" - 16 Wing Nut w/ Washer	2
14	400-A04	Spindle Assembly	1
15	400-024	Chip Shield	1
16	400-508	Coupling 1"	1
17	400-509	Spider	1
18	400-507	Coupling 3/4"	1
19	400-569	Lexan Chip Shield	1
20	SBHCSCREW 0.25-20x0.375-HX-N	SBHCS 1/4" - 20 x 3/8"	3
21	400-035	Large Lovejoy Guard	1
22	400-591-G	Gearbox -- P7172010.B1	2
23	FW 0.3125	5/16" Flat Washer	4
24	HX-SHCS 0.3125-18x2x1.375-N	SHCS 5/16" - 18 x 2"	4
25	400-503-M	1 HP Motor (Single Speed) -- 110058	1
26	400-591-M	1.5 HP Motor (Variable Speed) -- 110125.00	1
27	400-597	Variable Speed Control Box	1
28	MOTOR SWITCH	Single Speed Motor Switch	1
29	1100-505	1/4" T-Handle Allen Wrench	1
30	1100-504	3/4" Wrench	1

### Basic Ultimate Tubing Notcher Assembly



**PROPRIETARY AND CONFIDENTIAL**  
 THE INFORMATION CONTAINED IN THIS DRAWING IS THE SOLE PROPERTY OF MITTLER BROS. MACHINE & TOOL. ANY REPRODUCTION IN PART OR AS A WHOLE WITHOUT THE WRITTEN PERMISSION OF MITTLER BROS. MACHINE & TOOL IS PROHIBITED.

UNLESS OTHERWISE SPECIFIED:		NAME	DATE
DIMENSIONS ARE IN INCHES		DRWN	4/11/07
TOLERANCES:		CHECKED	
FRACTIONAL ±0.015		ENG APPR.	
ONE PLACE DECIMAL ±0.015		MFG APPR.	
TWO PLACE DECIMAL ±0.010		Q.A.	
THREE PLACE DECIMAL ±0.005			
ANGULAR ±1°			
QUANTITY	MATERIAL	FINISH	LENGTH
		COMMENTS	
NEXT ASSY	USED ON		
APPLICATION	DO NOT SCALE DRAWING		

**MB MITTLER BROS. MACHINE & TOOL**  
 10 Cooperative Way, Wright City, MO. 63390  
 (636)745-7757 Fax (636)745-2874

TITLE:  
**Ultimate Tubing Notcher**

SIZE DWG. NO. REV  
**B** 400-A00

SCALE: 1:8 WEIGHT: SHEET 1 OF 1